



Getting Started

WinEpic is a powerful Windows-like desktop for Symbian/Epic equipped pocket computers. It provides you with a familiar workplace allowing an intuitive control without losing any advantage of powerful Epoc operating system.

WinEpic is not only a desktop enhancement, it brings many new features and functions for your pocket computer. All its possibilities make using of your handheld device much more easier and comfortable.

This file is just a short introduction to WinEpic and its functions. Please refer to WinEpic's Help for more detailed information. Moreover, you can use WinEpic's technical support at support@jssolutions.cz if you have any questions.

Please remember that WinEpic is shareware, not freeware. If you find it useful (I believe so) and decide to continue using it, you have to register. You can find all needed information about registering in WinEpic's Help or at www.jssolutions.cz.

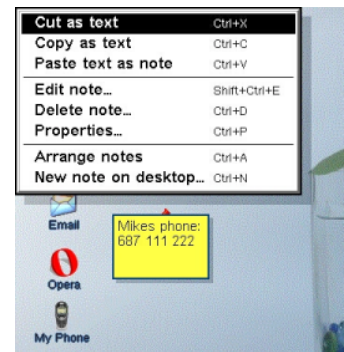


Working with WinEpic

You can control WinEpic intuitively and easily. You can use both a touch screen and a keyboard. WinEpic supports many familiar shortcuts so you get used to handle WinEpic in a short time.

In most cases, you can use contextual menus (*Menu* key) for working with different objects almost in the same way. Functions of shortcuts also depend on an object selected. I.e. if you select a link on desktop, pressing *Ctrl+P* calls a dialogue with preferences of the link; if a note is selected, pressing the same shortcut calls note's preferences dialogue.

WinEpic provides you to switch between three zoom levels for the best working comfort. You can use common "silk" icons for zooming or equivalent shortcuts. Moreover, there is a number of additional "Accessibility" settings.



Links on desktop

Links are the basic elements on desktop. You can create links to documents, applications, web pages and folders. You can also create so-called "multiple links" that can launch more documents and/or applications at once.



To create a link, press *Ctrl+N* (from desktop). To modify selected link, press *Ctrl+P*, or use *Ctrl+D* to delete it.

You can move links on desktop using drag&drop. You can cut, copy and paste links on desktop as usual with appropriate shortcuts.

You can arrange links on desktop when pressing *Ctrl+A* so the desktop will look more tidy then..

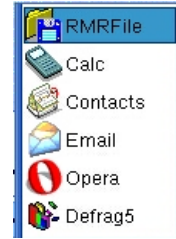
Links in menus

You can create links in menus as well and work with them mostly in the same way as with links on desktop. You can create up to 64 links in a menu. You are also allowed to copy or move links between desktops and menus.



Menus

The most recent version of WinEpic enables you to create menus not only in existing menus (such as *Start* or *Documents*), but on desktops as well. Each menu may include further submenus so it is only up to you how you want to arrange your links.



Notes on desktop

WinEpic provides you with an unique system of "sticky" notes that you can place on desktop. Anytime you need to note down something quickly, you can create a note on desktop. Notes are very easy to use, you can create a note with just pressing an uppercase letter and continue writing note's text. If you are working out of WinEpic at

the moment, you can call a dialogue for creating notes when pressing *Ctrl+Fn+N*.



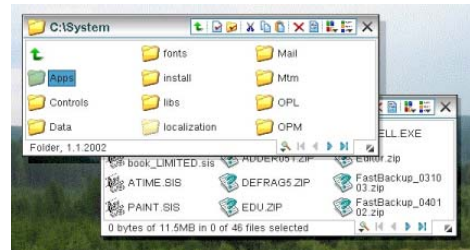
An additional way to create notes is to paste some text from System's clipboard as a new note on desktop. You can use *Ctrl+Shift+V* for doing so. Similarly, you can cut or copy a note as a text (*Ctrl+X* or *Ctrl+C* when a note is selected).

Each note may have a different colour and symbol, furthermore, you can set size of each note in several degrees.

Explorer

Explorer is a very powerful feature of WinEpic. It allows you to work with files and folders similarly as on your PC. You are allowed to open and work with up to four Explorer windows simultaneously. To open an Explorer window, click default *My Psion* icon on desktop.

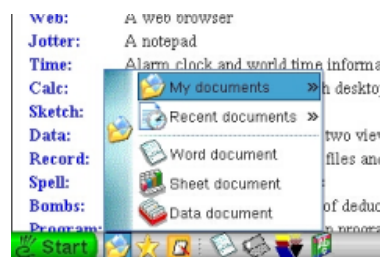
You can work with Explorer windows wholly intuitively. You can move and resize windows as needed. Each explorer window has its own title bar showing a current path and providing handy buttons for working with files and folders.



You can use drag & drop for moving or copying (when holding *Ctrl*) files and folders between Explorer windows. You can even simply create links on desktop when dragging selected file or folder from an Explorer window onto desktop.

Working with documents

WinEpic provides you with a special menu for working with documents. Besides place for your links to documents and list of recent documents, you are also allowed to quickly create new documents of most frequently used applications (you can set which applications will be connected with these functions). You can access your Documents menu from anywhere using global shortcut *Ctrl+Fn+D*.



Getting information about machine status

Bottom bar of WinEpic's workplace (StartBar) includes an information panel (so-called InfoBar). It provides you with an easy way to get all important information about your machine current status. You can click each icon on InfoBar to get even more information and



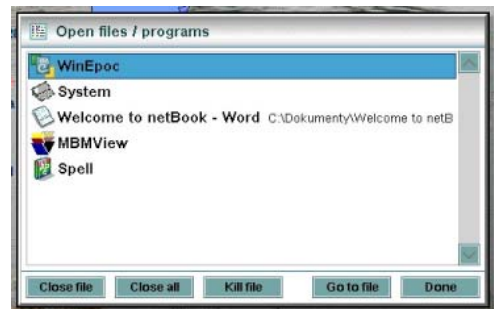


access to related settings. You can display detailed information about battery status or disk space when clicking appropriate icons and then clicking *More*.

Switching between running tasks

WinEpic allows you to switch between running tasks (i.e. open documents and applications) quickly and easily. You can use either *Ctrl+Space* or *Ctrl+Tab* shortcuts to activate switching tasks (used shortcut depends on current settings). Then you switch between tasks with pressing *Space* (or *Tab*) key and still holding *Ctrl*. Release *Ctrl* when you want to switch to a focused task. You can use letters for switching between tasks as well.

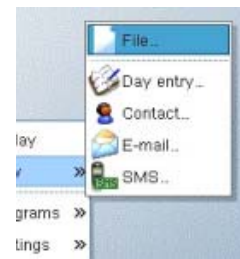
Moreover, you can use a fully-featured dialogue with a list of all running tasks (open documents and applications), similar to that System's one, but providing more functions. Use global shortcut *Ctrl+Fn+J* to display this dialogue from anywhere.



Advanced functions

There is a number of other functions provided by WinEpic. For example, you can set given Agenda file to be connected with WinEpic. After that, you can access this file using *Today* function in *Start* menu or create new day entries using *New -> Day entry*.

There are also functions for creating new contacts, e-mails and SMS messages. You can also use come-to-able functions for searching files, contacts or web.



Personalising WinEpic

WinEpic provides you with a wide range of possibilities how to personalise it. Here is a short list of such capabilities:

- **Multiple desktops**
You are not limited by only one desktop. If you wish, you can create up to 20 desktops. Each desktop has its own links, notes, wallpares and other settings. Therefore you can use separate desktops for work, home, leisure etc. You can switch between desktops quickly and easily using "Desktop" menu available directly from StartBar.
- **Wallpapers**
You can select different wallpaper for each desktop. Moreover, the latest version of WinEpic also allows you to set dynamic wallpapers - i.e. wallpapers are changed automatically after a given time interval (daily, weekly, fortnightly or monthly).
- **StartBar**
If you are not satisfied with a default look of bottom StartBar or just want to try something different, you can change whole StartBar's appearance (skin). Use *StartBar settings* to do so. Three default appearances are distributed within WinEpic, further skins can be downloaded from www.jssolutions.cz.
- **Links' icons**
When creating links, you are not limited by standard documents' icons. You can choose from 20 additional icons to create a more illustrative link.
- **Notes on desktop**
You can choose from several colours and symbols when creating notes on desktop. This possibility allows





you to differentiate various kinds of notes. You can also select note' size not depending on a length of its text.

- **Various settings**

Besides all above mentioned possibilities, WinEpic provides you with a number of advanced settings to make its use even more comfortable according to your wish. Please visit settings-related chapters for more information.

Settings

There is a wide area of settings enabled by WinEpic. You have many possibilities to adjust WinEpic's behaviour according to your wish. Besides these settings, you have also fast access to some machine settings.

